

Realtime TM-S6

The S5-R/S6-R reader is a metal case anti-vandal proximity reader, because of waterproof, it can be mounted either indoor or outdoor in harsh environments.

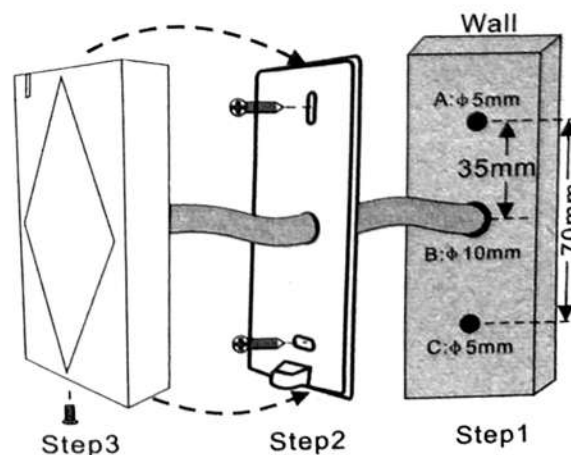


Specifications

Operation Voltage	9~24V DC
Standby Current	≤25mA
Frequency	125KHz / 13.56MHz
Read Range	≥ 3CM
Output Format	26 bits Wiegand (default) 26~37 bits available upon request
Operating Temperature	-40°C~60°C (-40°F~140°F)
Operating Humidity	10% to 95% RH
Index of Protection	IP66
Dimension(H x W x T)	103x48x19mm
Net Weight	260g
Shipment Weight	300g

Installation

- Drill 2 holes (A, C) on the wall for the screws and one hole for the cable
- Knock the rubber bungs to the holes (A, C)
- Fix the back cover on the wall with 2 screws
- Thread the cable though the cable hole (B)
- Attach the unit to the back cover



EM Card



TCP/IP



Access Control



RS232/485