

Hybrid IR Dome Camera

2M, WDR, STARVIS, 24IR

DTS-2024PMHD

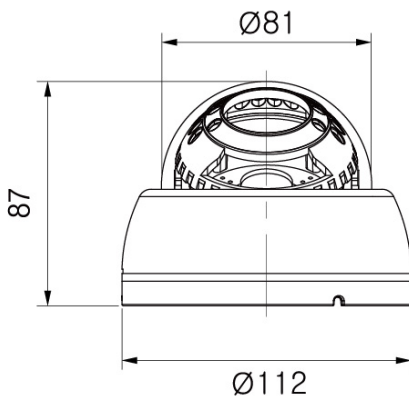
◆ Picture



◆ Feature

- 1/2.8" Sony PS **STARVIS** CMOS
- 2Megapixel TVI/AHD Hybrid format
- Day/Night with ICR
- Min 0.0003Lux with Sens-Up (32x), LED On:0Lux
- True WDR(30fps), 3DNR, Defog, OSD
- Motion Detection (4), Privacy Masking (16)
- Multi Languages (English/Chinese/Korea/Japanese)
- Built-In High Effective IR 24EA (Visible Distance: 15M)
- 3.6mm Fixed Mega Lens
- 3Axis, Indoor Type
- Option: Dual Voltage

◆ Dimensions



Unit: mm

◆ Specifications

MODEL	DTS-2024PMHD
Video	
Image Sensor	1/2.8" 2.1Mega(1080p) PS-Sony CMOS
Scan mode	Progressive Scan
Total number of pixels	1945(H) x 1109(V)
Number of active pixels	1945(H) x 1097 (V)
Resolution	1080P
Minimum illumination	Color:0.01Lux, 0.0003Lux with Sens-up(32x), LED On:0Lux
Video Output	AHD/TVI Selectable, extra CVBS
S/N Ratio	More than 50dB (AGC Off)
Lens	
Lens	3.6mm Varifocal Mega Pixel Lens
Iris	Electric Iris
Function	
Day & Night	Auto / Color / BW / EXT
White Balance	ATW/MANUAL/AUTO ext/PRESET
AGC	Level (0-10)
DNR	Off / Low / Middle / High
Mirror / Flip	Off / On
Privacy Zone / Motion	16 Zones / 4 Zones
Brightness	Level (0-20)
Shutter	Auto/Manual(1/30/25-1/30000)/FLICKER
Back light	HLC/WDR(120dB)/BLC
Defog	On/Off
IR LED	
LEDs	24 LEDs (850nm)
Visible Distance	15m
Environment	
Operating Humidity	30 % ~ 90 % RH
Operating Temp.	- 10°C to 50°(14°Fto122°F)
Electrical	
Power Consumption	Max 5.4W
Power Supply	DC12V±10%, Dual Type: AC24/DC12V(Option)
Mechanical	
Construction	Plastic body ,PC bubble
Dimension	112(W)mm x 87(H)mm x ø81(Bubble)
Weight	About 0.35Kg
Certificate	
	CE, FCC, KC